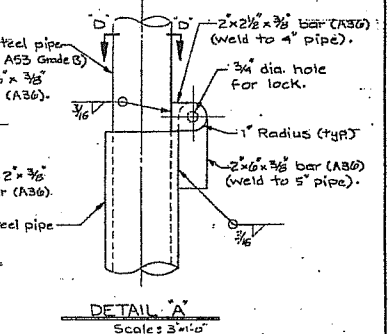
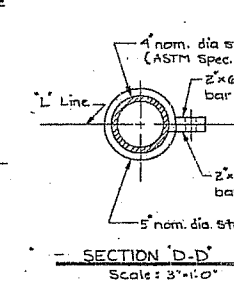
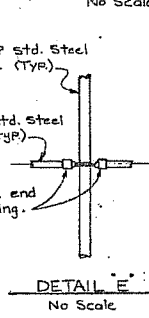
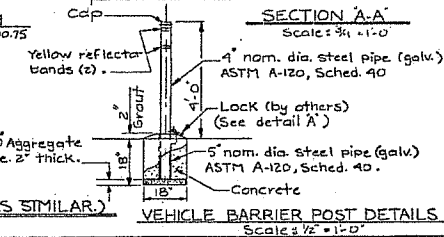
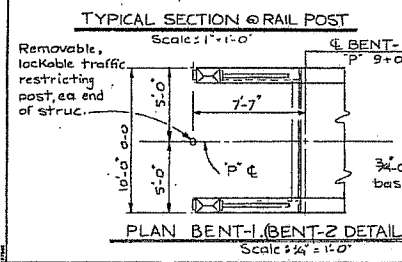
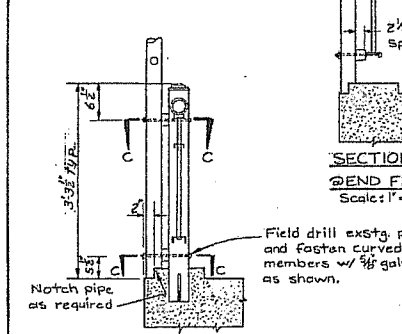
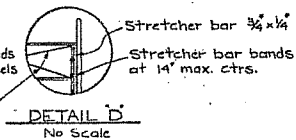
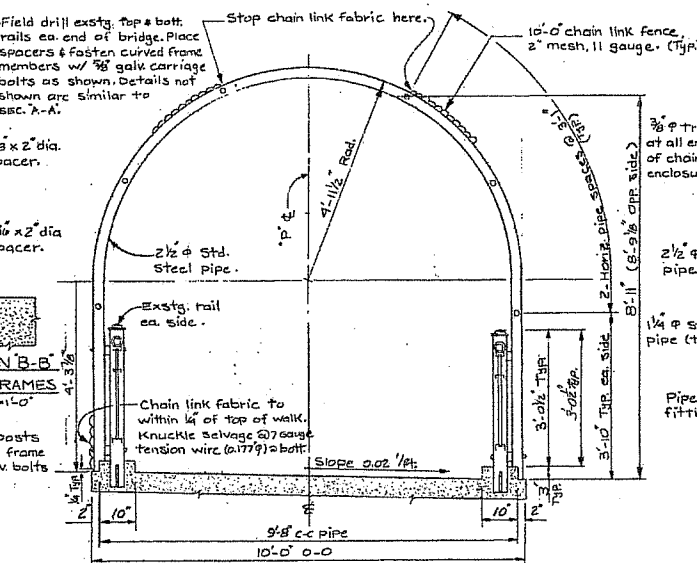
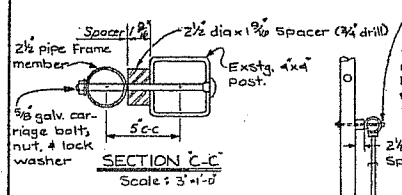


NOTE:
Existing ped. railing shall be sand blasted & painted prior to installation of chain link fence. (Per Special Provisions.)

GENERAL NOTES:
All material & workmanship shall conform to the Standard Specifications for Highway Construction of the Oregon Department of Transportation, Highway Division.
Chain link fabric, pipe & hardware shall conform to the specifications for fences. Any contact between dissimilar materials shall be separated by suitable insulating material as approved by the Engineer.
Concrete for vehicle barrier posts shall be commercial concrete.



	APPROVED:	OREGON DEPARTMENT OF TRANSPORTATION BRIDGE DESIGN SECTION U'XING PEDESTRIAN WALK (BRYANT ST.) DELTA PARK - MARQUAM BRIDGE SECTION PACIFIC HIGHWAY (I-5) M.P. 305.14 MULTNOMAH COUNTY
	THOMAS D. WILEY BRIDGE ENGINEER	
	NOWZAR ARDALAN REGISTERED PROFESSIONAL ENGINEER NO. 14887 DATE:	PEDESTRIAN SCREENING DETAILS ACCOMPANIED BY:
	Stephen B. Walker DATE:	
	J.E. Backstrand REGISTERED PROFESSIONAL ENGINEER NO. 14887 DATE:	DATE JULY, 1988 CALLBOOK 2851 SHEET 2 OF 32 BRIDGE NO. 9010A DRAWING NO. 43251
	J.E. Backstrand DATE:	DATE: 5-5-93 As Constructed 60 REVISION: OF: